

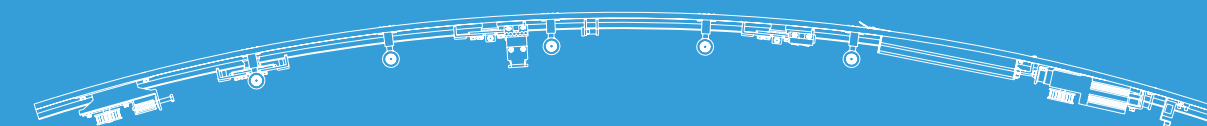


03

PART THREE

自动弧形门系列

Automatic Sliding Door Unit



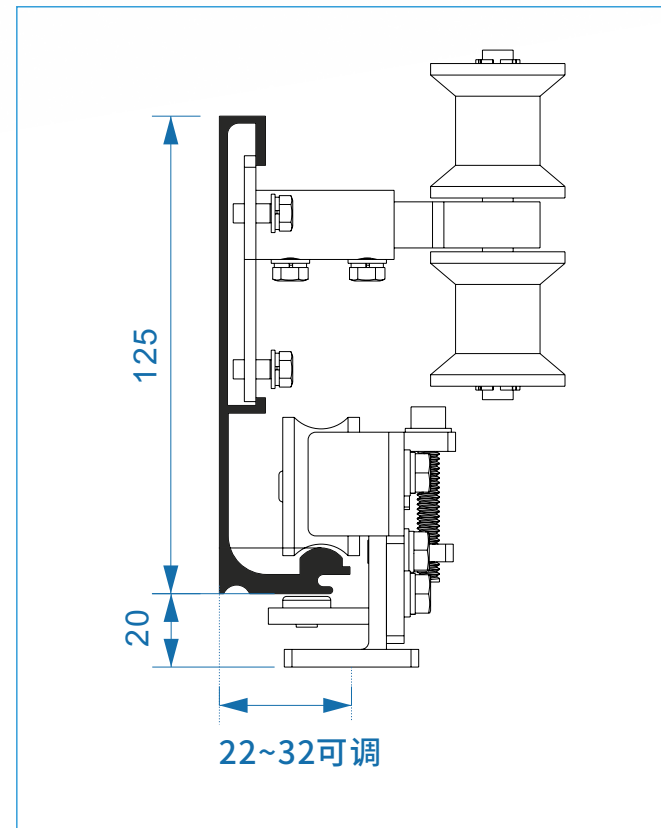
ORD-150H型 大弧形门机组

ORD150H -large arc door unit



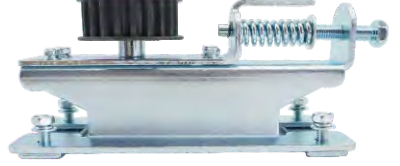
产品特点 PRODUCT PARAMETERS

- 微计算机智能控制和先进的机械制造;
Microcomputer intelligent control and advanced mechanical manufacturing;
- 自动调整门扇运行状态,必要时可人工调整;
Automatically adjust the operation status of the door leaf, and manually adjust it if necessary;
- 开、闭平顺,噪音低;
Smooth opening and closing, low noise;
- 无刷电机,使用寿命长;
Brushless motor, long service life;
- 双门互锁和电子锁功能,支持多种门禁系统;
Dual door interlock and electronic lock functions, support multiple access control systems;
- 轻重两用,承载能力大;
Dual purpose light and heavy, with large bearing capacity;
- 安装简便。
Easy to install.



技术参数 PRODUCT PARAMETERS

最大门重(单)	Max. door weight (single)	1×150KG
最大门重(双)	Max. door weight (double)	2×140kg
门体宽度	Door width	500~2000mm(adjustable)
电源输入	Power input	AC220V(±10%), 50-60Hz
电机型号	Motor type	24V 65W 直流无刷
安装方式	Installation mode	平移侧装
运行噪音	Running noise	<60dB
电锁输出	Electric lock output	0-60S(adjustable)
开闭时间	Opening and closing time	0~20S
工作温度	Operating temperature	-20~+50°C

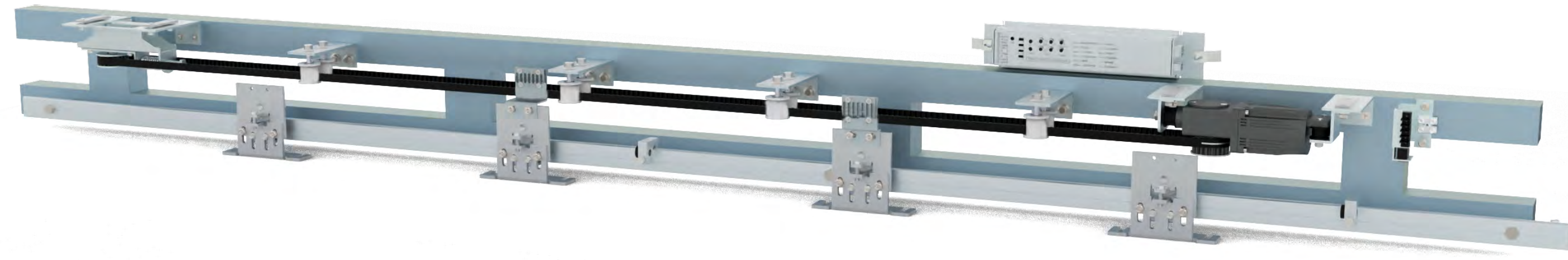
 控制器 Controller	 电机 Motor	 接线端子 Terminal	 遥控器 Remote
 皮带压轮 Belt roller	 吊轮 Hanger	 Pulley	 Belt
 皮带夹 Belt connector	 限位器 Stopper	 自动门配件 Door fittings	

可选配件 MAIN ACCESSORIES

 门夹 Door clip	 感应器 Micr- sensor	 地钉 Tent stake	 防夹光线 Anti pinch equipment	 备用电源 Backup
---	---	--	--	--

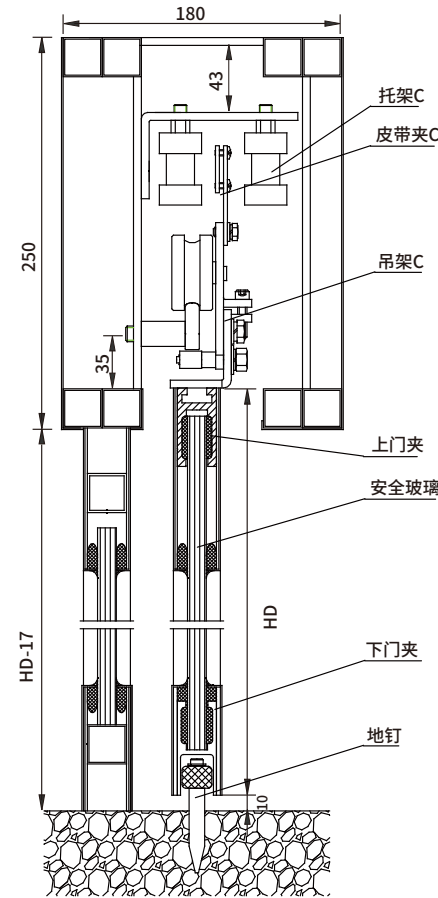
ORD-180H型 小弧形门机组

ORD180H small arc door unit



产品特点 PRODUCT PARAMETERS

- 外观高级豪华,适用于高档写字楼、银行、星际宾馆等
High-grade luxury appearance, suitable for high-end office buildings, banks, star hotels and other main entrances;
- 轨道现场折弯,无需提前定制,可随时根据现场条件,折弯不同弧度;
Track field bending, no need to customize in advance, can be bent at any time according to the field conditions, different radians;
- 微计算机智能控制和先进的机械制造;
Microcomputer intelligent control and advanced machinery manufacturing;
- 双门互锁和电子锁功能,支持多种门禁系统;
Support a variety of access control systems;
- 轻重两用,承载能力大。
Heavy and heavy use, large carrying capacity.



技术参数 PRODUCT PARAMETERS

最大门重(单)	Max. door weight (single)	1×150KG
最大门重(双)	Max. door weight (double)	2×140kg
门体宽度	Door width	500~2000mm(adjustable)
电源输入	Power input	AC220V(±10%), 50-60Hz
电机型号	Motor type	24V 65W 直流无刷
安装方式	Installation mode	平移侧装
运行噪音	Running noise	<60dB
电锁输出	Electric lock output	0-60S(adjustable)
开闭时间	Opening and closing time	0~20S
工作温度	Operating temperature	-20~+50°C

 控制器 Controller	 电机 Motor	 接线端子 Terminal	 遥控器 Remote
 吊轮 Hanger	 皮带压轮 Belt roller	 Pulley	 Belt
 电机架子 Iron shelf	 皮带夹 Belt connector	 限位器 Stopper	 固定轨道螺丝 Track screw

可选配件 MAIN ACCESSORIES

 门夹 Door clip	 感应器 Micr-sensor	 地钉 Tent stake	 防夹光线 Anti pinch equipment	 备用电源 Backup
---	--	--	--	--